

# nanoEM by Moorfield.

High-performance coating for electron microscopy.

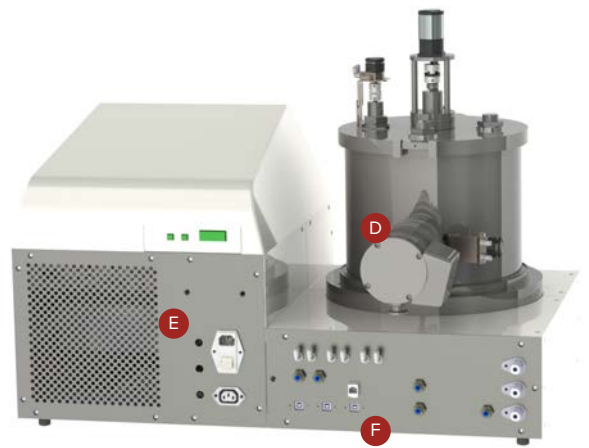


- Optimised for electron microscopy applications
- Multi-technique, e.g. gold and carbon
- Single or dual-source models
- Water-cooled sources for continuous operation
- Industry standard sputtering targets
- Best uniformity and coating quality
- SEM stub/TEM grid/wafer substrate supports
- High-vacuum base pressures  $<5 \times 10^{-7}$  mbar
- High performance DC power supplies
- Automatic recipe control via touchscreen HMI

**MOORFIELD**  
— NANOTECHNOLOGY —



A Vacuum chamber  
B Touchscreen HMI  
C DC power supply

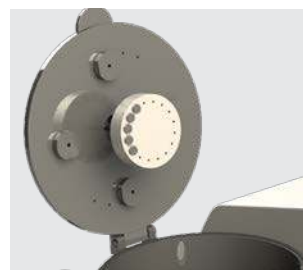


D Turbomolecular pump  
E Electrical connections  
F Water/gas/data connections

## The nanoEM system is the first electron microscopy (EM) coating tool with a full research-grade feature set.

The units include stainless-steel chambers, turbomolecular pumping systems, water-cooled circular magnetrons for continuous operation and a precision sputtering power supply (DC; up to 300 W) as standard, all in a space-saving benchtop package. Ease-of-use and coating speed are built in for routine preparation of TEM/SEM samples. Using high-end components and compatibility with conventional targets, the possibilities are endless.

- Electron microscopy and research-grade coating
- Compact, benchtop unit
- SEM stub/TEM grid/wafer supports
- Up to 2 × 2" magnetron sputtering sources
- Industry-standard sputtering targets
- Turbomolecular pumping to  $<5 \times 10^{-7}$  mbar
- MFC-controlled process gas
- Variable output DC power supply, up to 300 W
- Fully automatic, recipe operation via touchscreen HMI
- Automatic pressure control option
- Equipped for easy servicing
- Comprehensive safety features
- Cleanroom compatible
- Proven performance



ABOVE: nanoEM system.

LEFT: nanoEM chamber interior single magnetron sputtering source, and spare ports for additional source.

CENTRE: Coating as seen through the chamber viewport.

RIGHT: Substrate stages are connected to the chamber lid, are suitable for accepting SEM stubs, TEM grids or wafers, and are removable for easy loading.

Visit [moorfield.co.uk](http://moorfield.co.uk) or call +44(0) 1565 722609

Moorfield Nanotechnology Limited, Unit 1, Wolfe Close, Parkgate Industrial Estate, Knutsford, Cheshire, UK, WA16 8XJ.  
Registered in England and Wales with company number 3044718.